

Sesi Kilat

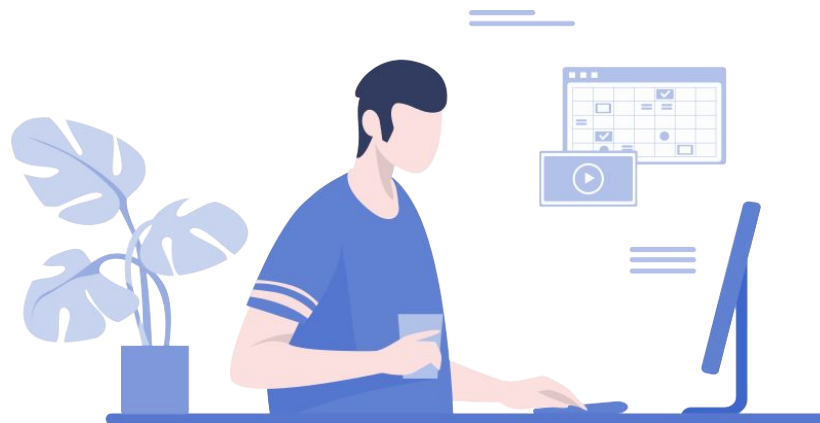
Weave Scope

Visualization and Monitoring Tool for Docker and Kubernetes

Oleh

Ananda Dwi Rahmawati

Yogyakarta, 2020



ananda@btech.id | <https://misskecupbung.wordpress.com>



Sekilas

Tentang Nama Pemateri

Ananda Dwi Rahmawati

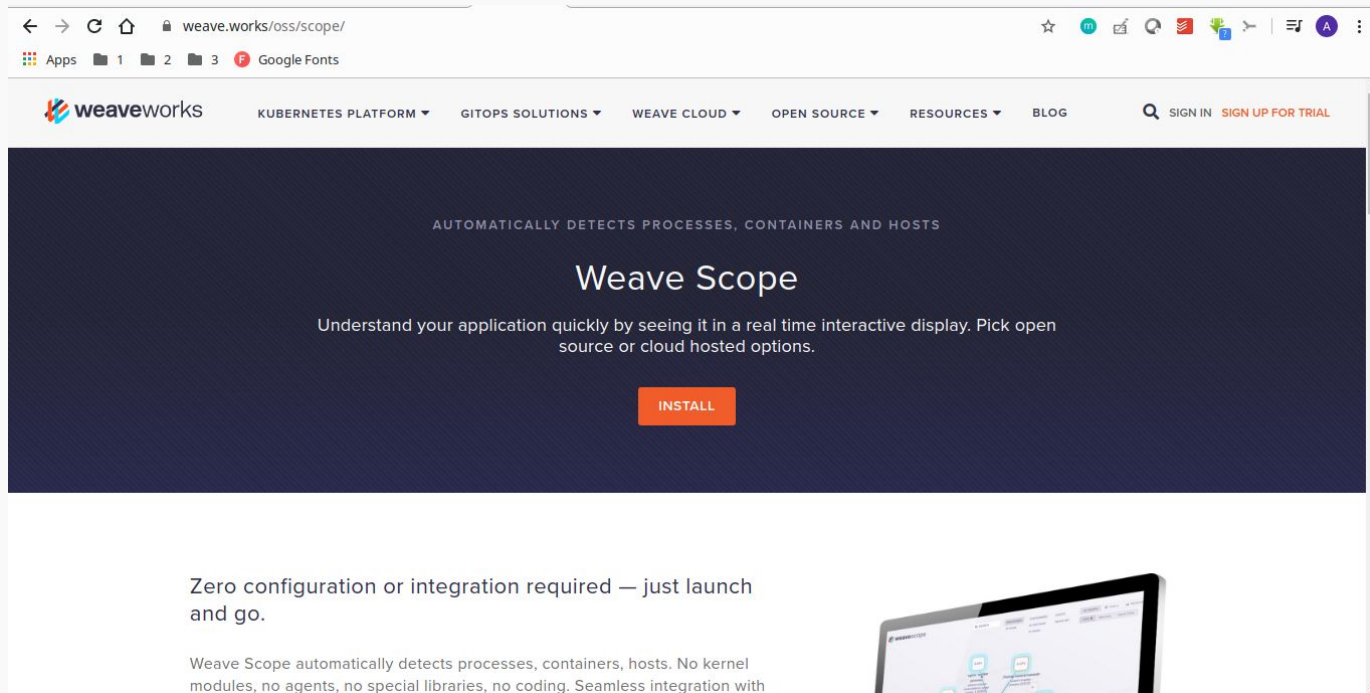
18 tahun.

Cloud Engineer PT Btech

Mahasiswa

Kontak :

- <https://t.me/misskecupbung>
- <http://linkedin.com/in/anandadwir>



Halaman Weave Scope

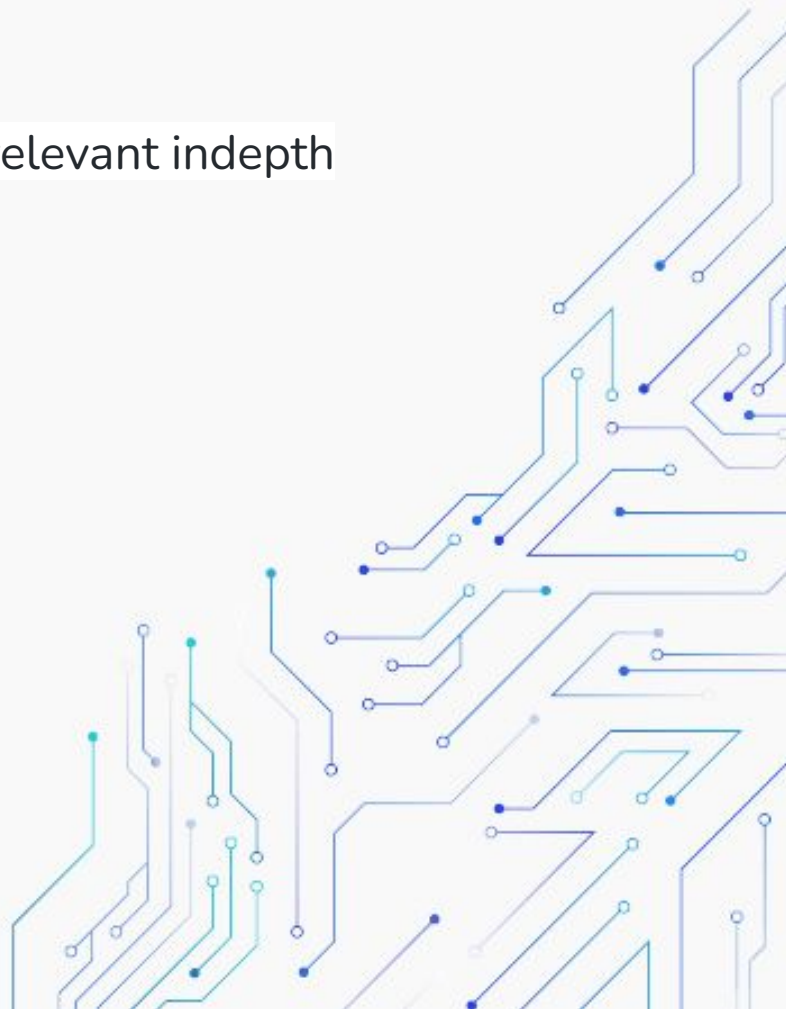
Gb. Tangkapan Layar

Sumber : <https://www.weave.works/oss/scope/>

Weave Scope

Browse the current feature set for Scope with links to relevant indepth topics:

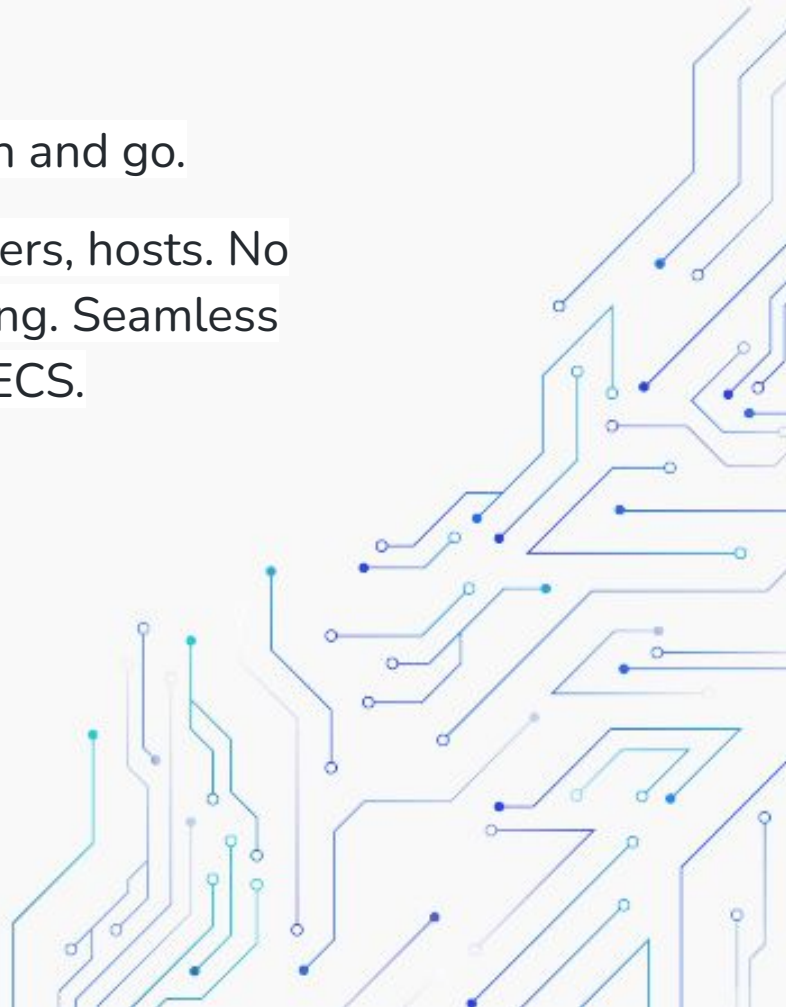
- Topology Mapping
- Views in Scope
- Graphic or Table Mode
- Flexible Filtering
- Powerful Search
- Real-time App and Container Metrics
- Troubleshoot and Manage Containers
- Generate Custom Metrics using the Plugin API



Weave Scope

Zero configuration or integration required — just launch and go.

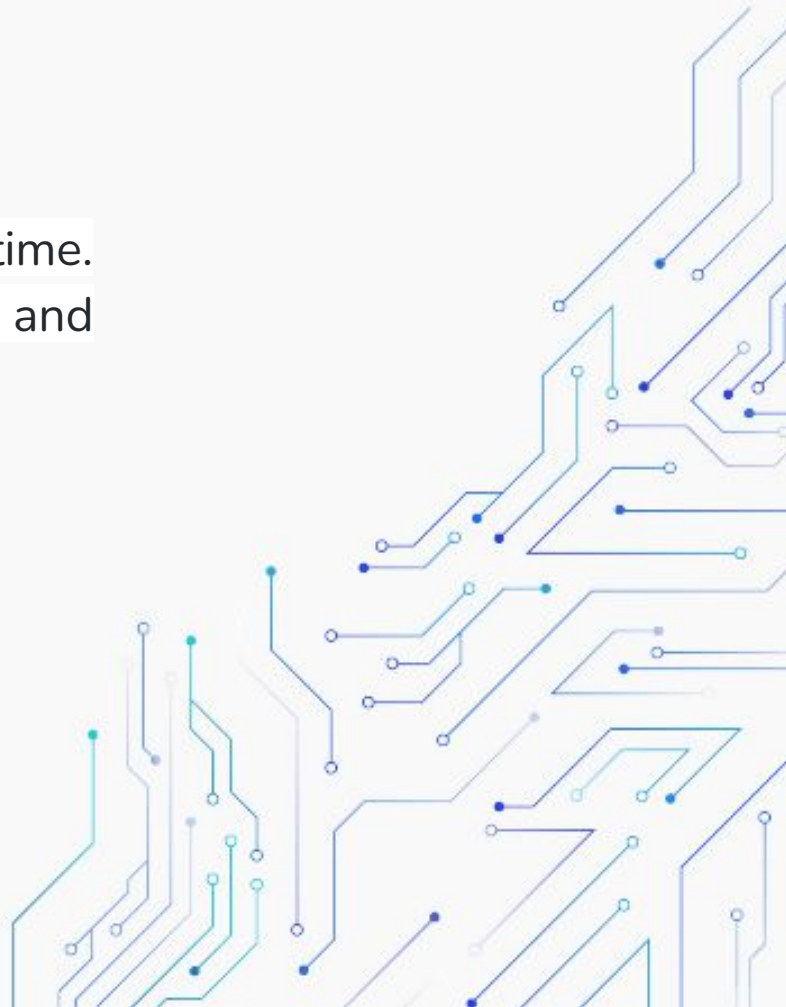
Weave Scope automatically detects processes, containers, hosts. No kernel modules, no agents, no special libraries, no coding. Seamless integration with Docker, Kubernetes, DCOS and AWS ECS.



Features

Real-Time View

See your Docker hosts, containers and services in real time. Easily identify and correct issues to ensure the stability and performance of your containerized applications.



Features

Drill Down

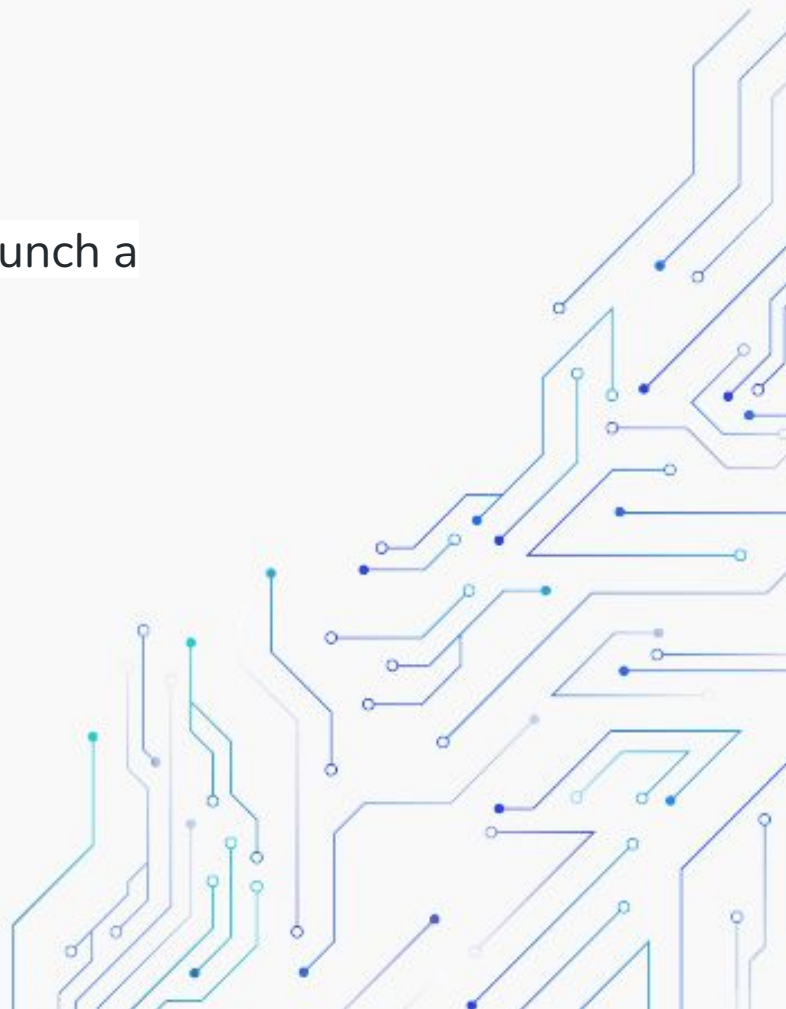
View metrics, tags and metadata within the context of a process, container, service or host. Effortlessly navigate from processes inside your container to Docker hosts.



Features

Access and Control

Stop, start, pause and restart containers. View logs. Launch a command line. All without leaving Scope.



Bash Script

Install on Docker

```
$ sudo curl -L git.io/scope -o /usr/local/bin/scope
```

```
$ sudo chmod a+x /usr/local/bin/scope
```

```
$ scope launch
```

Halaman

Install Weave Scope



Bash Script

```
# Install on Kubernetes
```

```
$ git clone https://github.com/weaveworks/scope
```

```
$ cd scope
```

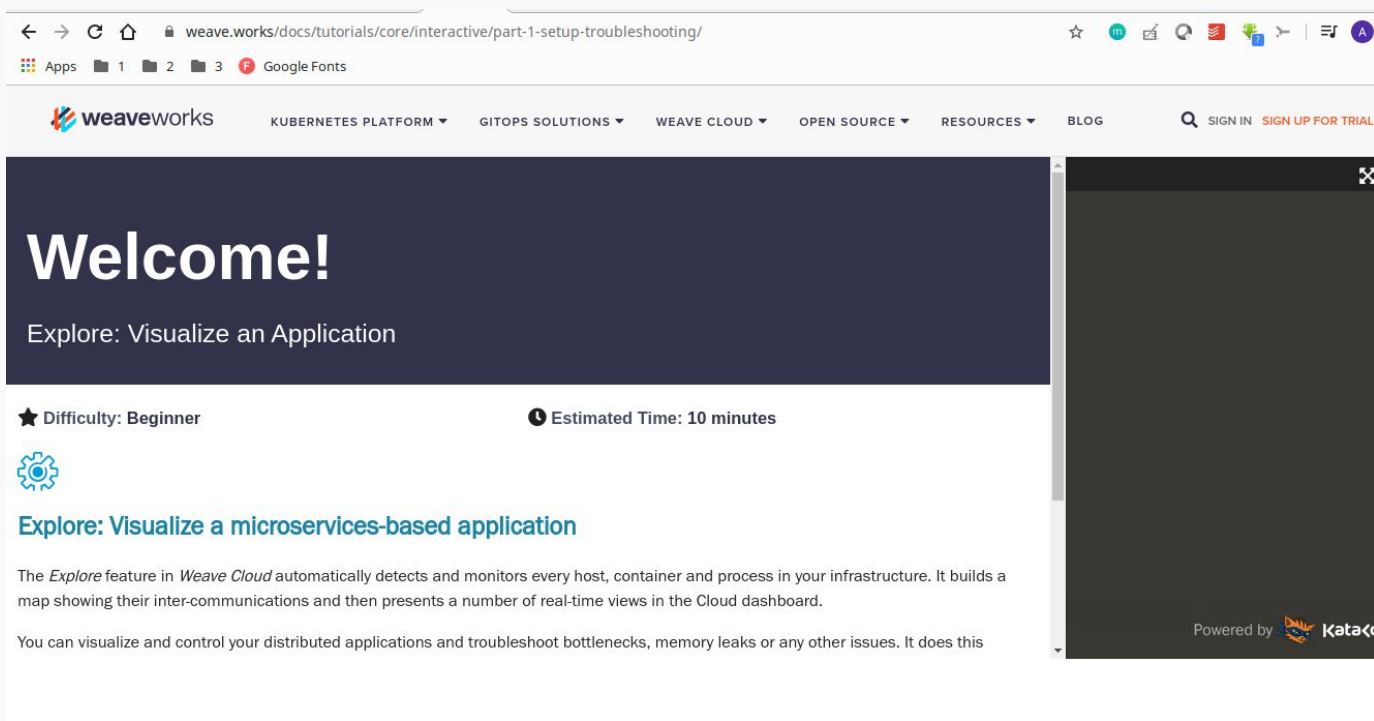
```
$ kubectl apply -f examples/k8s
```

```
$ kubectl port-forward svc/weave-scope-app -n weave  
4040:80
```

Halaman

Install Weave Scope





The screenshot shows a web browser window with the URL `weave.works/docs/tutorials/core/interactive/part-1-setup-troubleshooting/`. The page header includes the Weave Works logo and navigation links for KUBERNETES PLATFORM, GITOPS SOLUTIONS, WEAVE CLOUD, OPEN SOURCE, RESOURCES, and BLOG. There are also links for SIGN IN and SIGN UP FOR TRIAL. The main content area has a dark blue header with the text "Welcome!" and "Explore: Visualize an Application". Below this, it indicates a difficulty level of "Beginner" and an estimated time of "10 minutes". A gear icon is present, followed by the section title "Explore: Visualize a microservices-based application". The text describes the *Explore* feature in *Weave Cloud*, which automatically detects and monitors infrastructure, building a map of inter-communications and presenting real-time views in the Cloud dashboard. It also mentions that users can visualize and control distributed applications and troubleshoot bottlenecks, memory leaks, or other issues. On the right side of the page, there is a large, dark image placeholder with the text "Powered by Katacoda" at the bottom.

weave.works/docs/tutorials/core/interactive/part-1-setup-troubleshooting/

Apps 1 2 3 Google Fonts

weaveworks KUBERNETES PLATFORM GITOPS SOLUTIONS WEAVE CLOUD OPEN SOURCE RESOURCES BLOG SIGN IN SIGN UP FOR TRIAL

Welcome!

Explore: Visualize an Application

★ Difficulty: Beginner ⌚ Estimated Time: 10 minutes

⚙️

Explore: Visualize a microservices-based application

The *Explore* feature in *Weave Cloud* automatically detects and monitors every host, container and process in your infrastructure. It builds a map showing their inter-communications and then presents a number of real-time views in the Cloud dashboard.

You can visualize and control your distributed applications and troubleshoot bottlenecks, memory leaks or any other issues. It does this

Powered by Katacoda

Gb. Tangkapan Layar

Sumber :

<https://www.weave.works/docs/tutorials/core/interactive/part-1-setup-troubleshooting/>

Halaman
Try and Learn!

”

Keep learn till die!



Ada pertanyaan?



Terima Kasih!

Mitra Komunitas #GerakDariRumah

